

# Chris Hani District Municipality

CHRIS HANI  
DISTRICT MUNICIPALITY  
TRAINING THROUGH OUR PEOPLE

8/3/12 - 2021/2022 TENDER OPENING REGISTER 0747

CLUSTER 4 WATER SUPPLY BACKLOGS ERADICATION

PROGRAM: NORA / JOYMENT / SECONDARY BULK & WATER SUPPLY

Closing date & Time: 27/07/2021 12H00

Bid Name and No.:

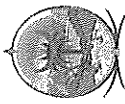
No.	Bidder Name	CSD NUMBER	BBEE Certificate	CK	Company Profile	Tax Compliance Status Pin	CIDB	JV Agreement	ID Copy	Bid Amount
1	KNWATHWILIZWE JODWA JV	0071783	YES	YES	YES	YES	YES	YES	YES	R28 697 916,96
2	SAFIKA CONSTRUCTION	0056226	YES	YES	YES	YES	YES	N/A	YES	R32 118 388,13
3	PRINKE OF TIDES	0226583	YES	YES	YES	YES	YES	N/A	YES	R52 912 718,11
4	IZIBHANO ZETHU	0331133	YES	YES	YES	YES	YES	N/A	YES	R31 592 876,64
5	ZIPHOTHU JV	081148	YES	YES	NO	YES	YES	YES	YES	R38 452 289,74
6	PRUMELELA JV SARCEL	0330960	YES	YES	YES	YES	YES	YES	YES	R32 478 627,99
7	HOU JV	0180555	YES	YES	YES	YES	YES	YES	YES	R29 000 000,00
8	MABONA CIVILS	0082422	YES	YES	YES	YES	YES	N/A	YES	R34 821 671,59
9	EXCELLECT 20 CC	0548181 0099647	YES	YES	YES	YES	YES	N/A	YES	R34 742 019,12
10	MONTINENTAL	0099647	YES	YES	NO	YES	YES	N/A	YES	R36 790 278,29
11	GICINA SONKE	0174754	YES	YES	YES	YES	YES	N/A	YES	R20 884 360,89
12	TIENS PLANT HIRE	0349445	YES	YES	NO	YES	YES	N/A	YES	R33 947 947,53
13	NSG VITSA JV	0252328	YES	YES	YES	YES	YES	YES	YES	R35 673 682,55
14	KHWELE'S CONSTRUCTION	0036568	YES	YES	NO	YES	YES	N/A	YES	R29 447 642,69
15	MUSCON CIVILS	038929	YES	YES	YES	YES	YES	N/A	YES	R37 588 996,15
16	LHLENATHI PROPERTY	0182440	YES	YES	YES	YES	YES	N/A	YES	R36 268 180,24
17	DEVOMIX CONSTRUCTION	0419557	YES	YES	YES	YES	YES	N/A	YES	R45 837 451,06

Name and Surname: ZANDILE MALENDABA / No. Lukhanyo  
Kwaqiso - Lorraine Boman

Signature: [Handwritten Signature]

[Handwritten Initials]

THE REPORTER (C2549) BARRIY EAST



# Chris Hani District Municipality

CHRIS HANI  
DISTRICT MUNICIPALITY  
SUSTAINING & RESERVE  
THROUGH OUR PEOPLE

8/3/12 - 2021/2022 TENDER OPENING REGISTER 0748  
CLUSTER 4 WATER SUPPLY BACKLOG ERADICATION PROGRAM

CLUSTER 4 WATER SUPPLY SECONDARY BULK & WATER SUPPLY

Bid Name and No.: NCORA/JOIMENI Closing date & Time: 29/07/2021 12:00

No.	Bidder Name	CSD NUMBER	BBBEE Certificate	CK	Company Profile	Tax Compliance Status Pin	CIDB	JV Agreement	ID Copy	Bid Amount
18	MATEMBA CIVILS	0491034	YES	YES	YES	YES	YES	N/A	YES	R30 738 140,31
19	MAGNACORP 485	0873148	YES	YES	NO	YES	YES	N/A	YES	R46 400 757,76
20	MADSTOF RHINEBA JV	0146990	YES	YES	NO	YES	YES	YES	YES	R31 101 591,99
21	WEIRD INDUSTRIES	0043606	YES	YES	NO	YES	YES	N/A	YES	R49 251 311,67
22	SINALIMA CIVILS	0997663	YES	YES	YES	YES	YES	N/A	YES	R31 943 115,12
23	VENLEO GROUP	0648448	YES	YES	YES	YES	YES	N/A	NO	R39 719 792,84
24	ICON CONSTRUCTION	0107208	YES	YES	NO	YES	YES	N/A	YES	R35 101 680,00
25	EG PIPING CC	0154026	YES	YES	YES	YES	YES	N/A	YES	R39 157 579,00
26	TM CONSORTIUM JV	0529332	YES	YES	YES	YES	YES	YES	YES	R35 851 566,91
27	AFRI CONSTRUCTION JV	002662	YES	YES	YES	YES	YES	YES	YES	R34 225 587,58
28	P WISE PROJECTS JV	0099520	YES	YES	NO	YES	YES	YES	YES	R39 138 799,27
29	NANISWA JV	0401119	YES	YES	NO	YES	YES	YES	YES	R38 799 558,79
30	MFURAA PROJECTS	0203746	YES	YES	YES	YES	YES	N/A	YES	R45 072 328,16
31	MSB ULTRA JV	0143470	YES	YES	YES	YES	YES	YES	YES	R35 870 355,94
32	CAPE KEI CONSTRUCTION	0353357	YES	NO	NO	YES	YES	N/A	YES	R36 443 097,53
33	BITLINE SA 1060	0335125	YES	YES	YES	YES	YES	N/A	YES	R30 098 874,58
34	LG CONSTRUCTION	0087531	YES	YES	YES	YES	YES	N/A	YES	R32 168 333,98

Name and Surname: JANDILE MALENDI/GRACE LORRYA BONOMO? Signature: [Signature] THE REPORTER (25546) BARNLEY EAST



# Chris Hani District Municipality

CHRIS HANI  
DISTRICT MUNICIPALITY  
THROUGHOUT THE PROVINCE

8/3/18 - 2021/2022

## TENDER OPENING REGISTER

0749

CLUSTER 4 WATER SUPPLY BACKLOG ERADICATION PROGRAM.

NCORA / JOJWENI SECONDARY BULK & WATER SUPPLY

Bid Name and No.: Closing date & Time: 29/07/2021

No.	Bidder Name	CSD NUMBER	BBBEE Certificate	CK	Company Profile	Tax Compliance Status Pin	CIDB	JV Agreement	ID Copy	Bid Amount
35	SHARON DIVERSIFIED	0205712	YES	YES	YES	YES	YES	N/A	YES	R34 929 679,95
36	TOWN AND AROUND	0387868	YES	NO	YES	YES	YES	N/A	NO	R34 913 046,47
37	B & B TRANSPORT	0016539	YES	YES	NO	YES	YES	N/A	YES	R36 554 105,95
38	MUMALANGA	0078097	YES	YES	YES	YES	YES	N/A	YES	R31 730 000,01
39	MNEZO PLANT	0015134	YES	NO	NO	YES	YES	N/A	YES	R39 962 406,58
40	COALITION TRADING	0036580	YES	YES	YES	YES	YES	N/A	YES	R39 920 461,97
42	LEBAPA CONSTRUCTION	0029934	YES	YES	YES	YES	YES	N/A	YES	R36 529 727,79
43	BLACK TOP CIVILS	0028204	YES	YES	NO	YES	YES	N/A	YES	R36 965 954,36
44	THINALUTSHA JV	0389908	YES	YES	YES	YES	YES	YES	YES	R34 520 050,41
45	ANIX CONSTRUCTION	0130591	YES	YES	YES	YES	YES	N/A	YES	R33 827 042,204
46	CYCLE CIVILS	0046888	YES	YES	YES	YES	YES	N/A	YES	R34 420 705,43
47	PARIFRO (PTY) LTD	0919442	YES	YES	YES	YES	YES	N/A	YES	R30 998 840,12
48	GINGSOPIN METHODS	0276691	YES	YES	YES	YES	YES	N/A	YES	R35 906 527,22
49	JAMMO CIVILS	0098738	YES	NO	YES	YES	YES	N/A	YES	R30 000 000,00
50	ZAMISANANI PROJECTS	0243017	YES	YES	NO	YES	YES	N/A	YES	R32 819 365,61
51	RENCOR TRADING	037830	YES	YES	YES	YES	YES	N/A	YES	R48 631 499,12
52	RUMACON PTY LTD	0029220	YES	YES	YES	YES	YES	N/A	YES	R35 050 779,96

Name and Surname: ANDILE MAMENDABA / Keaya-keaya Bonam Signature: [Signature]  
 Noluthando [Signature]